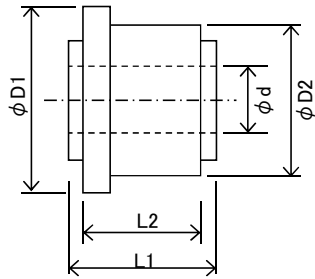


・モールドCOM

(Mold type)



略号 / SYMBOL

- ・2T(2枚合ワセ) : 2pieces combined segment bar
- ・T(銅管式) : CUT-type
- ・B(バー式) : CMB-type
- ・SM(バー式セグメントマイカ使用) : CMB+mica-type
- ・Ir(リング入り) : with insert ring
- ・Ag : Ag contained copper bar

COM寸法表

No.1

●モールドCOM(バー式) Mold Commutator (from Copper bar)

T	D1	D2	L1	L2	d	備考
7	10.4	10.4	8.9	6.4	4	
	12.3	12.3	10	7.5	4	
8	14.8	14.8	8.6	7.5	4	
9	10.4	10.4	8.9	6.4	4	Ag
	25	20.5	22	19	10	
11	20.5	20.5	14.3	12	7.8	
14	24.3	24.3	20	17.5	8	
15	26.4	26.4	15	12	9	
	38	38	34.5	32	13	
16	15	14.4	13	9	4.8	
	20	20	13	11	7.5	
	36	31	25	22	12.4;13	
	36	31	37	34	12.4;13	
17	40	35.5	27	23	16	SM
18	10.4	10.4	8.9	6.3	4	
	19	18.5	12	9	4.8	
	20	18.5	14	11.5	7.6	
19	28.5	24.2	21.7	19.3	8.1	
	48	38.5	28	24	18	
21	26	23.5	16	13	10	Ag
	29	27.3	18.5	15.5	15.7	Ag
	35	30.3	22.5	19	13	
	37.5	28.5	21	19	11	
	39	28.5	27.5	21.8	13.2	
	41	34.5	29	27	16	
	41	36.5	27	22	15	
22	21.5	21.5	14	11	10.5	Ag
	23.5	23.5	17.5	14	11	Ag
	25.5	25.5	20.5	14	12	
	30.5	28.5	21.5	18	12	
23	21	19.3	13	10.5	6	Ag
	21.3	20.4	27.6	12	6	Ag
	32.3	31	31.2	17.4	10	Ag

●モールドCOM(バー式) Mold Commutator (from Copper bar)

T	D1	D2	L1	L2	d	備 考
24	20	20	13	11	7;10	
	20	20	16	11	8	
	20.5	20.5	16	13	8	
	21.5	21.5	17.5	14	10;11	Ag
	23.5	23.5	17.5	14	9;10;12	Ag
	24.4	24.4	19.5	16	11	
	25	25	19.5	16.5	9	
	28.5	28.5	17.5	14	10;12	Ag
	28.5	28.5	20.5	17	9;12	Ag
	30	29.5	25	20	11	
25	62	52.5	42	36	21	Ag
28	25	25	14.5	11.5	9	
	30.3	30.3	24.5	19	12	Ag
	30.5	28.5	18.5	15	12.8	Ag
	30.5	28.5	24.5	19	12	Ag
	32.3	32.3	18.5	15	12	Ag
	32.3	32.3	24	20.5	14	Ag
28	35	34	21	17	12.5	Ag
	35	34	30.5	25	13	Ag
29	36	26.5	30	27	10	
	48.6	48.6	51	45.2	21	
30	29.5	27	16	12	11	Ag
	26.4	26.4	15	12.5	8.2	
	28.5	28.5	21	14	12	Ag
	28.5	28.5	24.5	17	12	Ag
	30.5	30.5	28	22.5	11.4	Ag
	38	38	34.5	32	13	
31	46	40.5	32	28	18	Ag
	58	50.2	38.5	32	37.4	
	65	60.5	40	34	23	
32	32.3	32.3	23	17.5	13	Ag
	33.8	33.8	24	20	12	Ag
	34	30.5	27.5	20.5	10	Ag
	35	34	24	20	12.5;14.5	
	36.5	36.5	30	25	15	Ir,Ag
	37	34	27	22.5	12.7	
	37.4	35.4	30	25	14.5	
	37.5	36	27	22.5	15	
	38.5	35.4	30	25	12.5	
	38.5	38.5	30	25	15	
		43	40.5	32	26	14.5

●モールドCOM(バー式) Mold Commutator (from Copper bar)

T	D1	D2	L1	L2	d	備考
32	38.5	38.5	30	25	15	Ir,Ag Ag
	43	40.5	32	26	14.5	
	56	48	33	30	18	
33	27	25.5	20	16	8	Ag Ag Ag
	60	48.5	31	27	23	
	60	50.5	31	27	23	
	107.5	80.5	61	54	33	Ir,2T
	110	85	61.5	57	32	
	130	100	63	57	35	
	130	100	113	99	35	
34	37.5	35.5	27	22.5	11;12	
36	21	21	14	11	8	Ag Ag
	25.5	25.5	19	16	9	
	28.5	27.5	23	17	9	
	39	36.5	24	20	12,14	
	40	37	24	24	14	
	60	52	39	35	18	
37	26.3	24.5	11	8.4	16	Ag
	34	32.5	11.5	8.5	17	
	54	48.5	28	25	18	
	107.5	80.5	61	54	33;35	
38	64	53.5	40	34	18	Ag Ag
	37.5	37.5	33	28	12	
	49	47	40.5	36.5	19	
	52	49	42	33.5	20	
	52	49.5	30	26	16	
39	27	23.5	18.5	14.5	12	
41	21	19.5	11	9	7	Ag Ir
	27.5	23.5	16	13	7	
	46	40.4	21	18.8	18	
	46	40.4	43	40.8	18	
	58	50.4	44	41	23	
	59	41.5	26	23	19.8	
	104	80.5	62	55	29	
	110	85	61.5	57	32	
	130	100	113	99	35	
	138	105	71	57	40	
	138	105	93	79	40	
	145	115	71	57	40	
	190	150	74	40	40	

●モールドCOM(バー式) Mold Commutator (from Copper bar)

T	D1	D2	L1	L2	d	備考
42	27.5	23.5	16	13	10	
	34	30.3	22.5	19	13	
	40.5	36.5	27	22	13,15	
45	104	80	51.5	47	32	
	104	80	59	47	32	
	104	80	61.5	57	32	
	104	80.5	68	55	32.1	Ag
	110	85	61.5	57	32	
	160	131	81	73	39	Ag
48	48.5	45.5	21	17	17	Ag
	48.5	45.5	34	30	16	Ag
	32	32	20	16	12	
49	31	28.5	18	14	9	
	34	32.1	14.5	11.5	15.9	Ag
	40	35.5	20	16	15	Ag
	40	37.5	26	22	15	
	43	40	15.8	12.8	19.9	Ag
	114	91	62	55	33	Ag
	123	101	85	74	33	
	129.5	102	77.7	67.6	34	Ag
	130	101	85	74	39	
152	115	71	57	40		
50	56	50.5	19	15.5	19	Ag
53	110	85	61.5	57	32	
	124	100	63	57	35	
56	68	63.5	36.5	29.5	19	
57	56	52	17	14	22.9	
	85	70	41	35	22	
	104	80	61.5	57	30	
	104	80.5	56	49	29	
	114	91	62	55	39	Ag
	128	100	63	57	35	
	130	100	84	74	39	Ag
	130	105	93	79	40	
136	111	63	54.5	39	Ag	

●モールドCOM(バー式) Mold Commutator (from Copper bar)

T	D1	D2	L1	L2	d	備 考
57	138	111	79	70	39	Ag
	150	131	81	73	39	Ag
	152	115	71	57	40	
60	93	85.5	61.5	57	28	
61	110	85	61.5	57	30	
	129	100	62	56	36	
	130	105	71	57	40	
62	56	50.5	19	15.5	19	Ag
63	38	34.5	18.5	14.5	16	Ag
	48	44.5	22.5	18	20	Ag
	50	44.5	23.5	18	20	
	52	47.5	21	16	19	Ag
	52	47.5	27	22	18	Ag
	72	70	44	32	24	Ag
	48.5	47	34	30	16	Ag
	64	50	26	22	18	Ag
65	104	80	39.5	35	32	
	104	80	51.5	47	32	
	104	80	61.5	57	32	
	110	85	51.5	47	32	
	110	85	61.5	57	32	
69	54	50.5	26	20	18	Ag
	66	60.5	32.5	26	23	
	81	75	51	35	28	
	104	80.5	71	64	32.1	Ir
	107.5	80.5	65	54	32	Ag
	124	100	53	47	36	
	124	100	60	47	36	
	130	100	88	74	39	
	140	110	62.5	54.5	39	
73	172	105.5	71	57	40	
75	65	61	30	24	22	
	66.5	65.5	35	30	21	
	78	75	29	22	22	
	98	84	55	40	27	
77	150	131	68	58	39	Ir

●モールドCOM(バー式) Mold Commutator (from Copper bar)

T	D1	D2	L1	L2	d	備 考
81	152 190	115 150	71 74	57 57	40 40	
83	52	47.5	20	16	17	Ag
84	52	47.5	20	16	15	Ag
87	107.5 107.5 130	80.5 80.5 115	61 65 78	54 54 50	33 32 45	Ag Ag Ir
90	67	62.5	43	37.5	23	
93	120	110	50	40	40	
99	69 80	65.5 70.5	25 31	21.5 27	23 26	Ag Ag
105	115	90.4	45	35	32	Ag
123	98	88.5	33	28	32	Ag